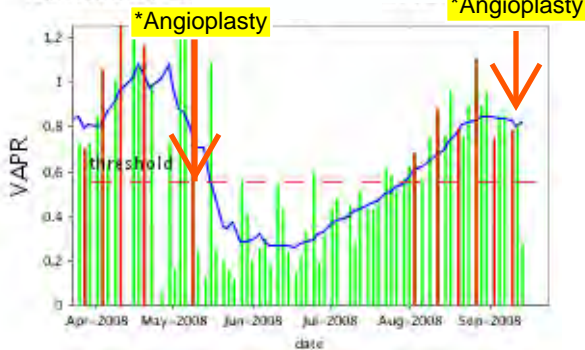
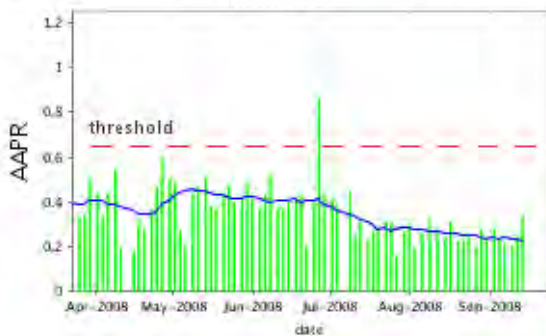




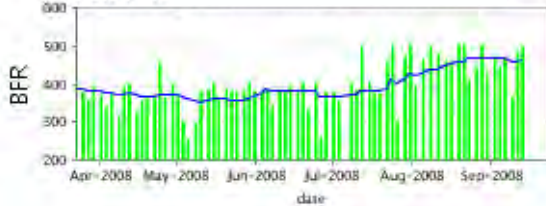
Venous Access Pressure Ratio



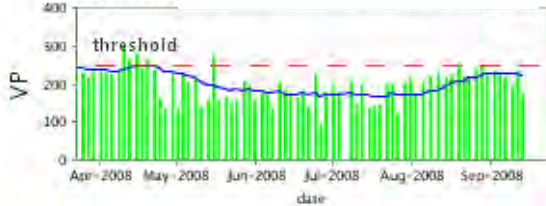
Arterial Access Performance Ratio



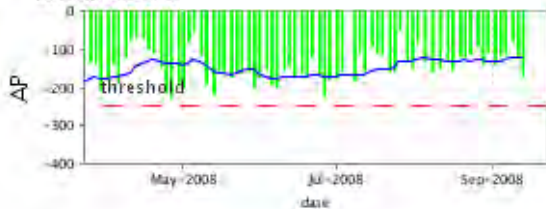
Blood Flow Rate



Venous Pressure



Arterial Pressure



Average Session Values

date	VAPR	AAPR	BFR	VP	AP
09/13/08	AV FISTULA 14				
09/13/08	0.282	0.341	498	176	-170
09/11/08	0.800	0.242	486	233	-125
09/09/08	>> 0.784 <<	0.204	369	192	-82
09/06/08	0.852	0.220	466	217	-112
09/04/08	0.849	0.241	448	231	-118
09/02/08	>> 0.750 <<	0.283	469	234	-140
08/30/08	0.957	0.232	432	229	-112
08/28/08	0.898	0.280	503	248	-142
08/26/08	>> 1.104 <<	0.195	452	241	-92
08/23/08	0.903	0.262	412	216	-114
08/21/08	0.757	0.225	506	219	-122
08/19/08	>> 0.790 <<	0.227	505	254	-121
08/16/08	0.965	0.316	454	219	-158
08/14/08	0.762	0.250	463	219	-128
08/11/08	>> 0.882 <<	0.287	479	231	-150
08/08/08	0.761	0.324	499	220	-162
08/05/08	0.565	0.263	466	203	-132
08/02/08	>> 0.686 <<	0.199	393	177	-86
07/31/08	0.627	0.296	505	213	-151
07/29/08	0.566	0.267	475	203	-135
07/26/08	0.512	0.162	306	124	-52
07/24/08	0.588	0.313	504	200	-157
07/22/08	0.621	0.316	460	198	-160
07/19/08	0.458	0.286	374	146	-117
07/17/08	0.428	0.270	376	143	-110
07/15/08	0.432	0.227	405	138	-94
07/12/08	0.516	0.314	502	197	-158
07/10/08	AV FISTULA 15				
07/10/08	0.285	0.250	384	148	-112
07/08/08	0.451	0.445	403	209	-183
07/03/08	0.485	0.389	353	177	-156

values over threshold >>alert<<

The threshold for VAPR values is 0.55 for fistula patients, and 0.55 for graft patients.
The threshold for AAPR values is 0.65 for fistula patients, and 0.6 for graft patients.
The threshold for VP values is 250.
The threshold for Negative AP values is -250.

Graph Legend

	average values for dialysis session		alert
	moving average		threshold

* These notes are added in this sample report to help visualize important changes in trend due to intervention. The notes are not included in standard reports issued by Vasc-Alert.